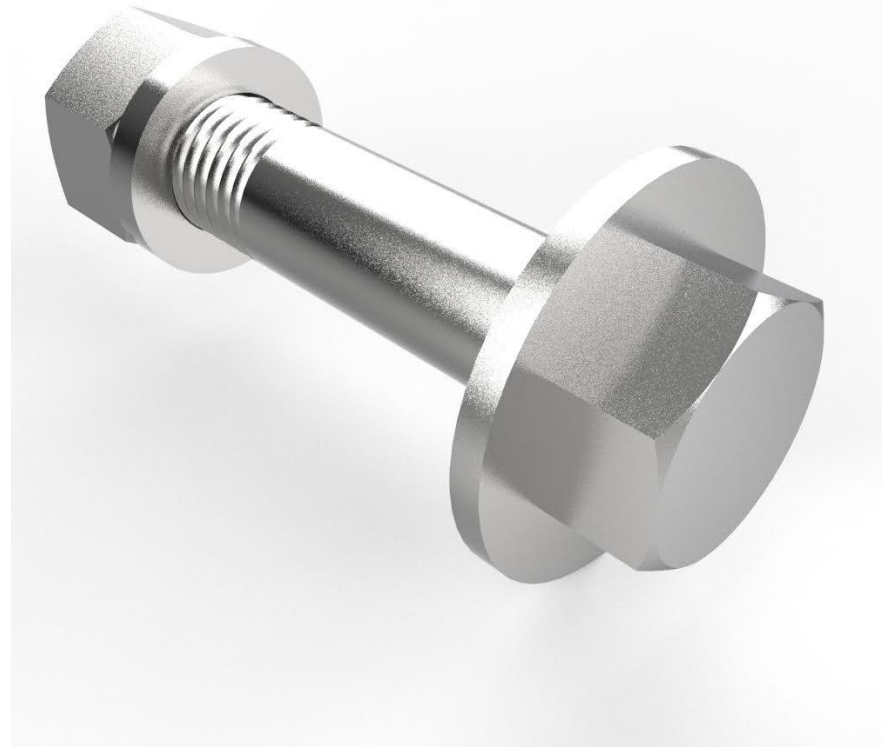


# 1" Bolt Assembly

## SPECS

MATERIAL	Cold Rolled Steel
HEIGHT	5.5"
WIDTH	1"
DEPTH	1"
WEIGHT	1.8 LBS
FOOT PRINT	5.5" x 1" x 1"
MADE IN USA	NO



Our 1" Bolt assembly is all zinc plated and comes with 1 5" bolt, 1 Lock washer, 1 Washer, and 1 hex nut. All our products come with 1 bolt assembly per attachment hole, for example, our Crossmembers come with 4 bolt assemblies.

## FEATURES



Bolt



Lock Washer



Nut