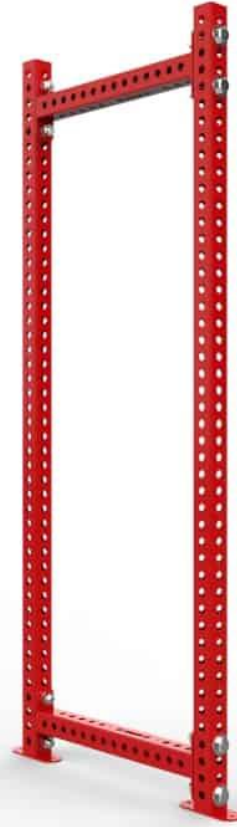


ATR Frame

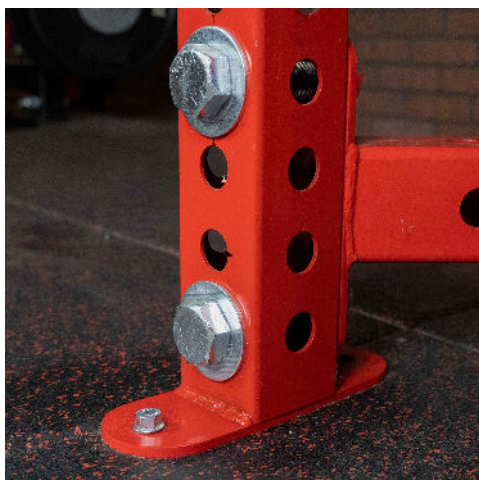
SPECS

MATERIAL	3x3 11 Gauge
HEIGHT	96"
WIDTH	3"
DEPTH	30"
WEIGHT	105 LBS
FOOT PRINT	96" x 3" x 30"
MADE IN USA	YES

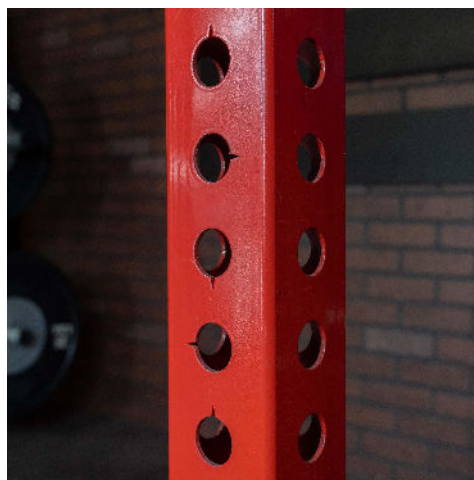


The Plain Side ATR is comprised of two 96" Ticked Uprights and two 30" Crossmembers which have our guide rod hole pattern to add machine attachments which can be done at any time. All ATR units are made out of 3x3 tubing with 1" holes and 2" hole spacing so all our attachments work on them.

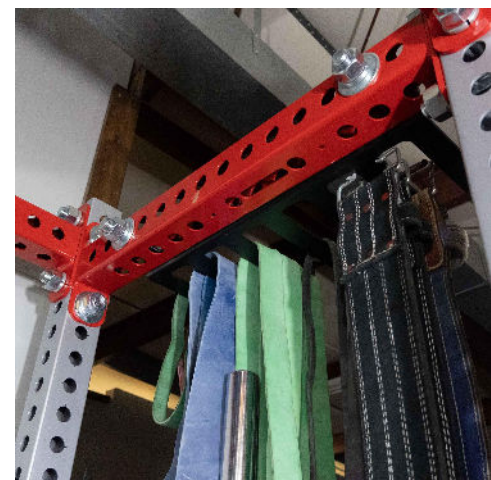
FEATURES



Built in Bolt Down Tabs



Ticked Posts



Guide Rod hole pattern