

Hex Bar Storage

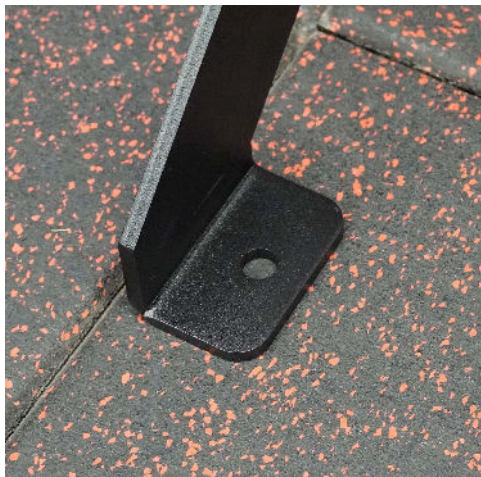
SPECS

MATERIAL	1/4" Steel Plate
HEIGHT	11"
WIDTH	41"
DEPTH	24"
WEIGHT	33 LBS
FOOT PRINT	11" x 41" x 24"
MADE IN USA	YES

FEATURES



We designed our Hex Bar storage with a bolt-together design for cheaper shipping and open ends allowing the end of the bar to hover over the ground and not get banged up in a bar sleeve. The holes have 4.5" between them making them 7" apart on center which allows for 6 hex bars to be stored without having to skip any holes.



Bolt down tabs



Bolt together construction



Bars don't touch ground